



# Fast, Multi-Target, Secure Hard Drive Wiper



- **Extremely Fast Hard Drive Sanitization at 24GB/min**
- **Wipe up to DoD Specification**
- **Wipe up to 8 target drives simultaneously**

The blazing fast ZX-Tower™ (ZX-T) wipe solution provides secure sanitization of hard disk drives and achieves speeds of up to 24GB/min. The multi-target ZX-T allows organizations to easily comply with NIST 800-88 Guidelines for Media Sanitization. The unit features a secure erase mode, a custom pass wipe setting and a powerful DoD specification 7-pass wipe mode.

The ZX-T wipes up to 8 targets and features an easy to use, icon-based interface that make it simple to operate for all skill levels. Log files provide comprehensive details of each wipe operation. Extremely reliable, the ZX-T hard drive wiper is the right choice for all your hard drive sanitization needs.

## FEATURES

- **High-speed wiping.** The ZX-T™ will sanitize hard drives at speeds exceeding 24GB/min
- **Multi-target wiping.** 8 dedicated 3.5" SAS/SATA bays, 4 USB 3.0 ports
- **Built-in support for 3.5" SAS/SATA hard drives.** Support for standard-height (up to 9mm) 2.5" SATA is available with an optional slide-in caddy. 2.5" SAS is supported with an optional adapter
- **IDE, 1.8" and 1.8" IDE ZIF drives** support is available using optional adapters
- **eSATA, mSATA, microSATA, M.2 PCIe (SATA and AHCI types), and flash media** supported with optional adapters
- **Supports wiping USB enclosures and USB thumb drives.** 4 USB 3.0 ports are available
- **DoD Wipe.** Supports 7 pass DoD 5220-22M wipe
- **Secure Erase.** Supports a single pass Secure Erase
- **Custom Pass Wipe.** Set a custom number of wipe passes. Gutmann 35 pass wipe can be accomplished using the Task Macro feature
- **Cable-free, slide-in bays** provide fast, worry-free, insertion/removal of drives
- **Network support.** Connect ZX-T to a network. ZX-T includes 2 Gigabit Ethernet ports
- **Multi-session capability.** Allows user to perform multiple tasks - up to 5 tasks can be run concurrently
- **Icon-based user interface is simple to use** and easy to navigate
- **5" Color touch screen** provides a bright, responsive display
- **Remote operation.** Connect ZX-T to a network and control all operations from a remote computer using a web browser. Remotely operate multiple ZX-T units that are connected to the same network
- **Advanced administrative functions** allow administrator to manage network settings, create user profiles, save configurations
- **Audit trail/log report** provides detailed information of each operation. Can be exported to HTML, XML or PDF format
- **HPA/DCO support.** Wipe/sanitize hidden areas which may exist on a hard drive
- **Task Macro.** Users can set specific tasks to be performed sequentially. Automates your processes to optimize and streamline operations
- **HDMI port** allows you to connect to a projector or monitor
- **USB 2.0 ports.** 3 USB 2.0 device ports available for mouse, keyboard or printer
- **Power-protected bays.** If a defective hard drive causes a power failure, only the bay in which the drive is inserted will shut down. The remaining bays will continue to operate.



# Fast, Multi-Target, Secure Hard Drive Wiper

## IN THE BOX

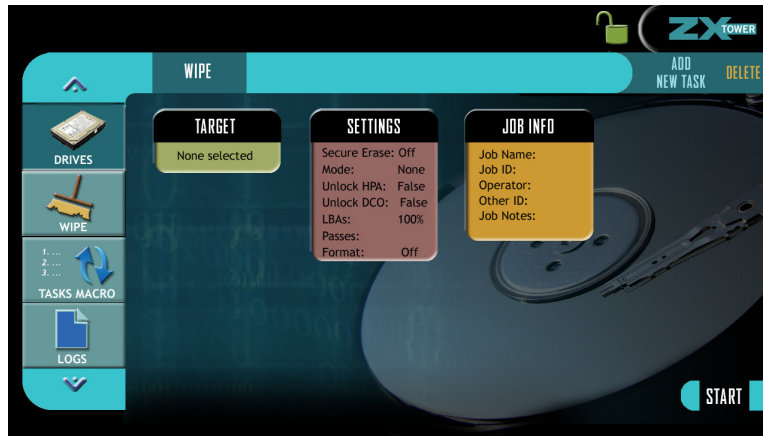
- Power Cord
- CD-ROM with Users' Manual

## OPTIONS

The following options are available with the ZX-Tower

- 2.5" to 3.5" SATA drive cartridge adapter
- 2.5" to 3.5" SAS/SATA drive cartridge adapter
- SATA/SAS 18" Extension adapter
- 2.5"/3.5" IDE to SATA adapter
- 1.8" IDE to SATA adapter
- 1.8" IDE ZIF to SATA adapter
- 1.8" microSATA adapter
- mSATA to SATA adapter
- eSATA 18" cable
- M.2 PCIe (SATA type) to SATA adapter
- M.2 PCIe (AHCI type) to USB3 adapter
- Flash card reader for compact flash media (connects to USB 3.0 ports)
- Extended warranties

Easy to use interface



## SPECIFICATIONS

Power Requirements	Operating Temperature	Storage Temperature	Relative Humidity	Net Weight	Dimensions	Agency Approvals
110V-240V 10A-6A 50-60Hz	32° -104° F 0°-40°C	-4° to 176°F -20° to +80°C	Operating: 85% RH, non-condensing	22 lbs 10kg	17"H X 17"D X 7.5"W 43.2cm X43.2cm X 19.1cm	RoHs compliant FCC Part 15 Class A CE